

Our Reference: NSW211526
Your Reference: HI21429

Suite 2, Level 1
33 Herbert Street
ST LEONARDS NSW 2065

PO Box 292
ST LEONARDS NSW 1590

T 02 9438 5098
F 02 9438 5398

28 October 2022

Health Infrastructure
C/- CBRE
Level 21, 363 George Street
Sydney NSW 2000

Attention: Adrian Thompson

Dear Adrian

ENGINEERS
MANAGERS
INFRASTRUCTURE
PLANNERS
DEVELOPMENT
CONSULTANTS

**Re: Nepean Hospital, Total Asset Management Redevelopment –
Review of Environmental Factors – Civil Works - R02**

The REF works associated with the Civil works include:

- In-ground stormwater network to service the new building and external areas, including provision for capacity to accept stormwater discharge from the CAMHS site area.
- Site regrading and pavement works external to the building envelope, including proposed driveway on the eastern side of the building, and altered access to the existing carpark to the west.
- Minor earthworks below the building where the floor level is below the existing natural surface.

The attached plans show the proposed stormwater and civil works.

The civil engineering components of the works will be designed in accordance with the following Australian Standards and guidelines:

- Australian Rainfall & Runoff 2019
- AS/NZS 3500.3:2018 Plumbing and Drainage: Stormwater Drainage
- Managing Urban Stormwater, Soils and Construction, Volume 1, 4th Edition, Landcom, March 2004
- Penrith City Council Development Control Plan 2014

Should you require any additional information please do not hesitate to contact the undersigned.

Yours faithfully,

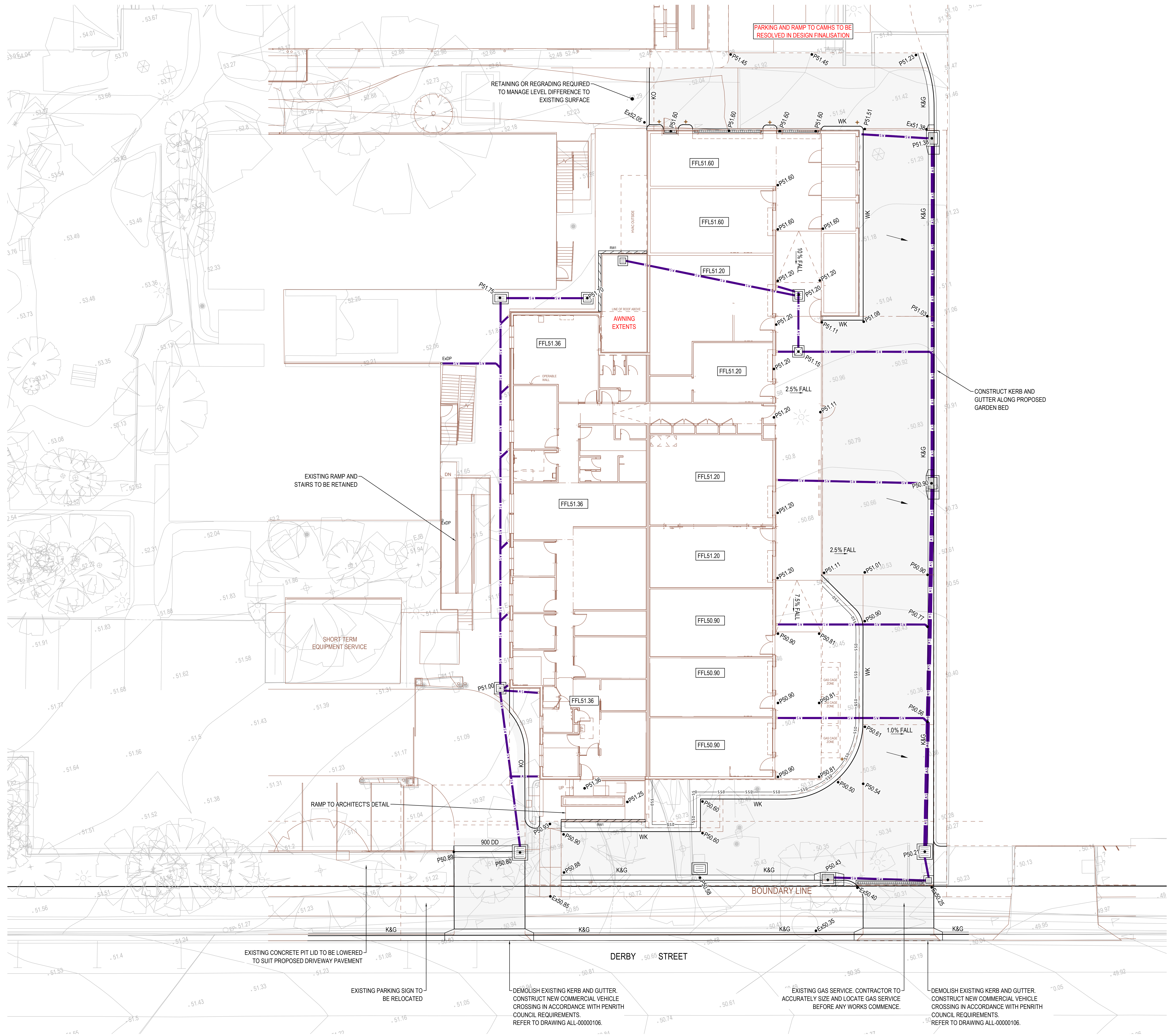
ACOR Consultants Pty Ltd



Nathan Pearce
Associate Senior Civil Engineer

ACOR Consultants Pty Ltd (ACN 079 306 246) (ABN 40 079 306 246)

www.acor.com.au

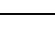
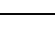










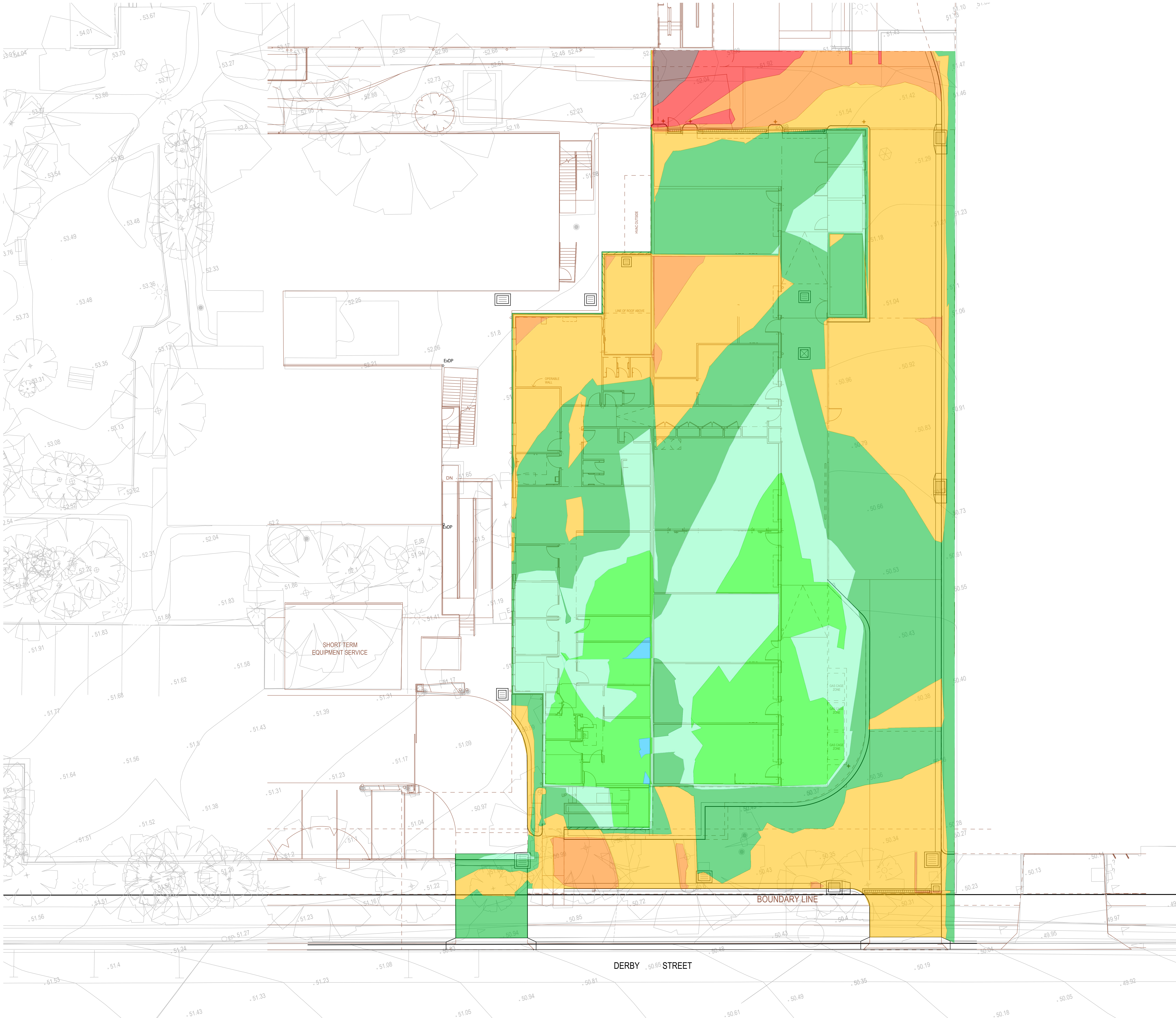
NOTE: ALL EARTHWORKS QUANTITIES ARE THEORETICAL AND INDICATIVE ONLY, BASED UPON ESTIMATED VOLUMES WITH NO ALLOWANCE FOR BULKING FACTORS. THE CONTRACTOR IS RESPONSIBLE FOR FINALISING EARTHWORKS CUT AND FILL QUANTITIES BASED ON SITE CONDITIONS ENCOUNTERED DURING EARTHWORKS OPERATIONS

CUT / FILL QUANTITIES	
TOTAL CUT (FROM EXISTING SURVEY OR MEL05 EARLY WORKS DESIGN BULK EARTHWORKS LEVEL TO FINAL BULK EARTHWORKS LEVEL)	-415m³
TOTAL FILL (FROM FINAL BULK EARTHWORKS LEVEL TO EXISTING SURVEY OR MEL05 EARLY WORKS DESIGN BULK EARTHWORKS LEVEL)	120m³
CUT/FILL BALANCE	-295m³ (CUT)

1. BULKING AND COMPACTION FACTORS HAVE NOT BEEN APPLIED TO THE CUT AND FILL QUANTITIES
2. A BOXING OUT OF 150mm FOR THE BUILDING FLOOR SLAB HAS BEEN ALLOWED FOR IN THE CUT AND FILL CALCULATIONS.
3. A BOXING OUT OF 380mm FOR TYPE 1 CONCRETE PAVEMENTS HAS BEEN ALLOWED FOR IN THE CUT AND FILL CALCULATIONS.
4. A BOXING OUT OF 500mm HAS BEEN ALLOWED FOR ALL TYPE 3 ASPHALT PAVEMENT IN THE CUT AND FILL CALCULATIONS.

DETAILED BULKING AND CUT / FILL QUANTITIES FOR FOOTINGS, SERVICES TRENCHING AND THE LIKE HAS NOT BEEN INCLUDED IN THE CUT AND FILL ASSESSMENT

LEGEND			
CUT		FILL	
-2.00 to -1.00 m		0.00 to 0.25 m	
-1.00 to -0.75 m		0.25 to 0.50 m	
-0.75 to -0.50 m		0.50 to 0.75 m	
-0.50 to -0.25 m		0.75 to 1.00 m	
-0.25 to 0.00 m		1.00 to 2.00 m	

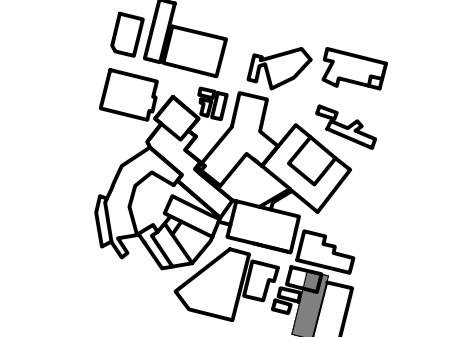


SCALE 1:100 @ A0

NOTE:
ALL DRAWINGS TO BE READ IN
CONJUNCTION WITH THE TRADE
PACKAGE COVER SHEET AND NOTES

PROJECT MANAGERS
CBRE
TEL 02 9333 3333
ARCHITECT
STEVENS THOMAS HANLEY
TEL 02 8239 4600
STRUCTURE / CIVIL
ACOR
TEL 02 9438 5098
MECHANICAL
ARUP
TEL 02 9320 9320
ELECTRICAL / COMMS
JVA
TEL 02 9437 1000
HYDRAULIC
ARUP
TEL 02 9320 9320
FIRE ENGINEERING
ARUP
TEL 02 9320 9320
LANDSCAPE
TAYLOR BRAMMER
TEL 02 9387 8855
BCA / DBA
BLACKETTS MAGUIRE + GOLDSMITH
TEL 02 9211 7777

PROJECT
NEPEAN HOSPITAL - STAGE 2
DERBY ST
KINGSWOOD NSW 2747
NEPEAN
ACOR PROJECT NUMBER
NSW211526
DRAWING KEY



TRUE NORTH PROJECT NORTH

SCALE

0 500 2000 4000

1:100mm

DO NOT SCALE

DRAWN BY: RD CHECKED BY: NP
DESIGNED BY: CR APPROVED BY: NP

FOR TENDER

DRAWING

TOTAL ASSET MANAGEMENT
BULK EARTHWORKS PLANNING

DRAWING NUMBER	ISSUE
NHR-ACR-DRW-CIV-TAM- ALL-00000201	A

[illegible]

TE:
DRAWINGS TO BE READ IN
CONJUNCTION WITH THE TRADE
PACKAGE COVER SHEET AND NOTES



ISW Health Infrastructure

HEALTH INFRASTRUCTURE
AGING CONTRACTOR

JECT MANAGERS
RE
02 9333 3333
HITECT
VER THOMAS HANLEY
02 8299 4600
TURE / CIVIL
OR
02 9438 5098
MANICAL
UP
02 9320 9320
TRICAL / COMMS
A
02 9437 1000
NALIC
UP
02 9320 9320
ENGINEERING
UP
02 9320 9320
OSCOPE
YLOR BRAMMER
02 9387 8855
DGA
ACKETT MAGUIRE + GDSMITH
02 9211 7777

PROJECT
PEAN HOSPITAL - STAGE 2
RBY ST
GSGWOOD NSW 2747
PEAN
R PROJECT NUMBER
W211526
DRAWING KEY



PROJECT	PROJECT NORTH
PROJECT NORTH	PROJECT NORTH

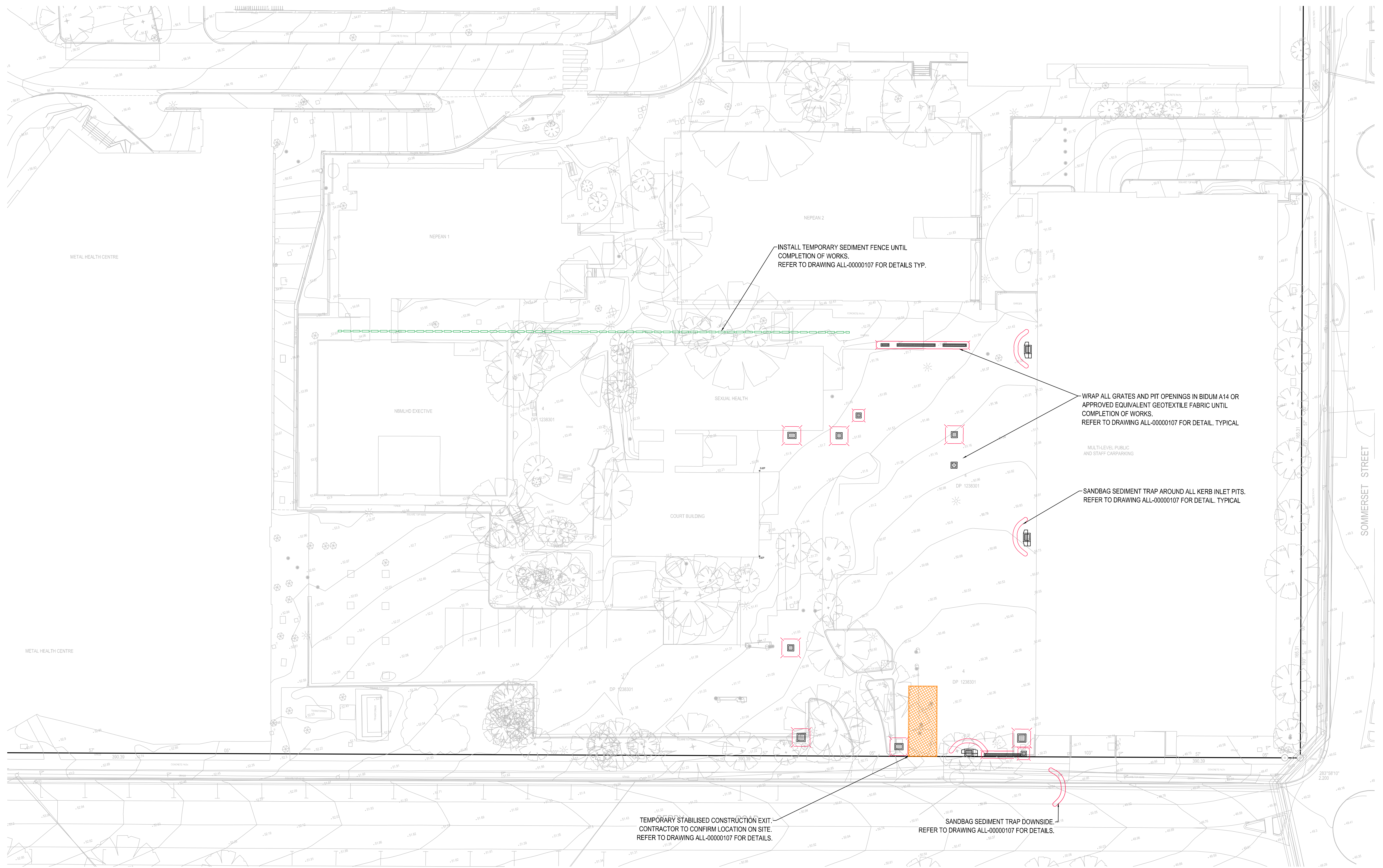
000 4000 8000

REVIEWED BY: CR
 APPROVED BY: NP

OR TENDER

TOTAL ASSET MANAGEMENT
SOIL EROSION AND
SEDIMENT CONTROL PLAN

WING NUMBER	ISSUE
R-ACR-DRW-CIV-TAM- LL-00000501	B



SCALE 1:200 @ A0